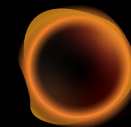




White Paper: Tools and functionality for large volume studio photography



CAPTURE ONE
ENTERPRISE

White Paper

Capture One Enterprise

Tools and functionality for large volume studio photography

Capture One Enterprise is designed for high-volume studios where efficiency is paramount. It comes with the same imaging benefits that Capture One Pro offers but with extra functionality specifically designed for a streamlined workflow. Enterprise users benefit from an expanded tool-box and automation solutions that can be tailored to the way their business works.

Tools exclusive to Capture One Enterprise are as follows:

1. Barcode scanner tool
2. Advanced Guides
3. Next Capture Backup
4. Next Capture Keywords
5. Next Capture Metadata
6. Tool Locks
7. Capture Pilot with Enterprise enhancements
8. Dedicated Studio workspaces

These tools were designed with automation at the heart of their user case. They can be scripted and combined in automated workflow design beyond the scope of the tool ability itself. See each tool for a description of how to leverage additional workflow potential.





Tools designed for workflow efficiency

01. Barcode scanner tool

Manually naming image files can be time consuming and prone to error. The Capture One Enterprise integrated Barcode scanner tool helps ensure assets are quickly named and identified correctly as they are captured. This hardware and software integration saves time and avoids any human error that can occur with manual data input.

It is important to point out that the Barcode tool is intended to be used in conjunction with the Next Capture Naming tool. The scanned barcode ID needs to be inserted as a part of the image name created during capture. This is done by using the Barcode Token as a part of naming structure in the Next Capture Naming tool.

This setup means that it is important to scan the Barcode before capturing the associated image – otherwise it cannot be applied automatically to the image name.

Barcode tool notes:

All barcode scanners need configuring before use with Capture One Enterprise. Please follow the instructions here.

Automation idea:

When a Barcode scan completes, the event can trigger an automated workflow. This might be to make a folder with the resulting scanned values, trigger a camera to capture, retrieve data from a source or load settings for a particular tool.

02. Advanced Guides

Working in a fast-paced e-commerce environment can mean photography teams need to shoot multiple products to exact layouts. The new advanced Guides Tool enables users to create accurate and reusable configurations to help save time and ensure consistency.

The Guides tool will allow you to position and display Guides over the image in the Viewer as an aid to getting the composition right and it is particularly useful when shooting tethered or cropping the image. The Guides tool is optimized to let you add guide lines and adjust their location with a high degree of precision by entering a specific position value in either %, px, mm, cm or in.

The Follow Crop option will fit the guide lines inside the chosen crop and follow it as you readjust the crop. If the option is deselected, the guide lines will fit the full image, regardless of the chosen crop. This can be a great way to add a visual "safe zone" along the boundaries of the image when cropping.

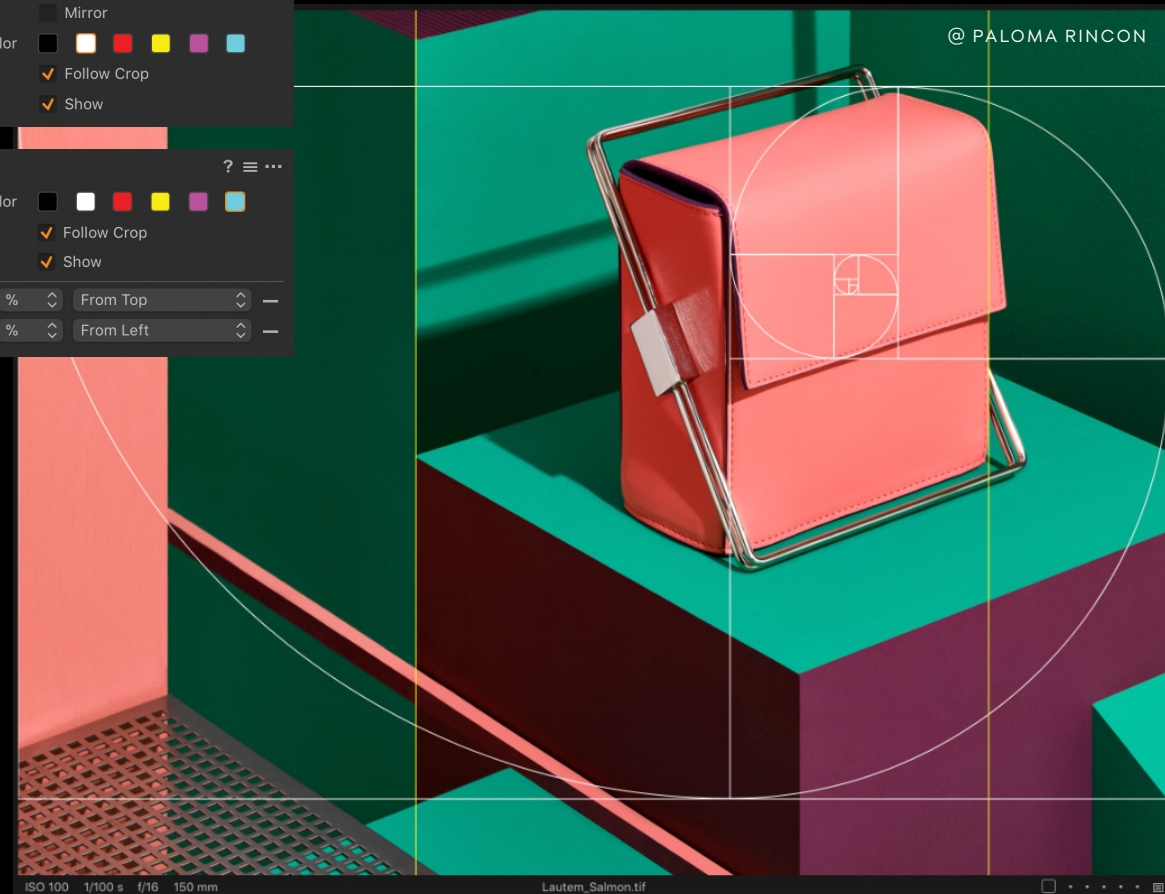
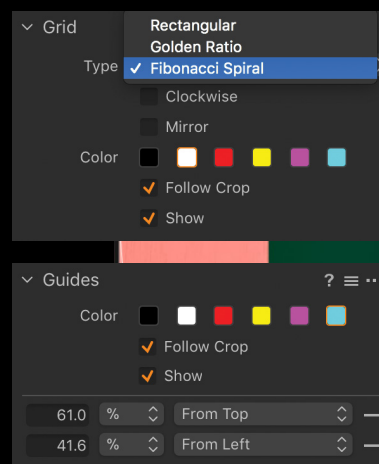
Exporting Guides:

The Guides can be exported for reuse in an external image editing app. If you export the image in the PSD file format, the guides will be converted to Photoshop's guide system so that you can move and readjust any guides added in Capture One Enterprise as well as toggling their visibility on and off in Photoshop. This is done by selecting the Guides option in the Process Recipe tool under Metadata and Workflow.

If you export the image in a file option other than PSD, the Guides will be baked (flattened) into the image file, when you select the Guides option in the Process Recipe tool under Metadata and Workflow.

Automation idea:

Design a set of guides to deploy as part of a particular workspace automation.



03. Next Capture Backup

Remove the risk of losing your image assets with the Next Capture Backup feature that automatically duplicates captured images during a tethered session to another drive.

The Next Capture Backup enables Capture One Enterprise to automatically make a backup of all the captured images during a tethered session to another drive. The tool also has a built-in backup queue manager that will let you stop and resume the backup procedure at any point in time, making it possible to continue the backup even after you have closed and relaunched Capture One Enterprise.

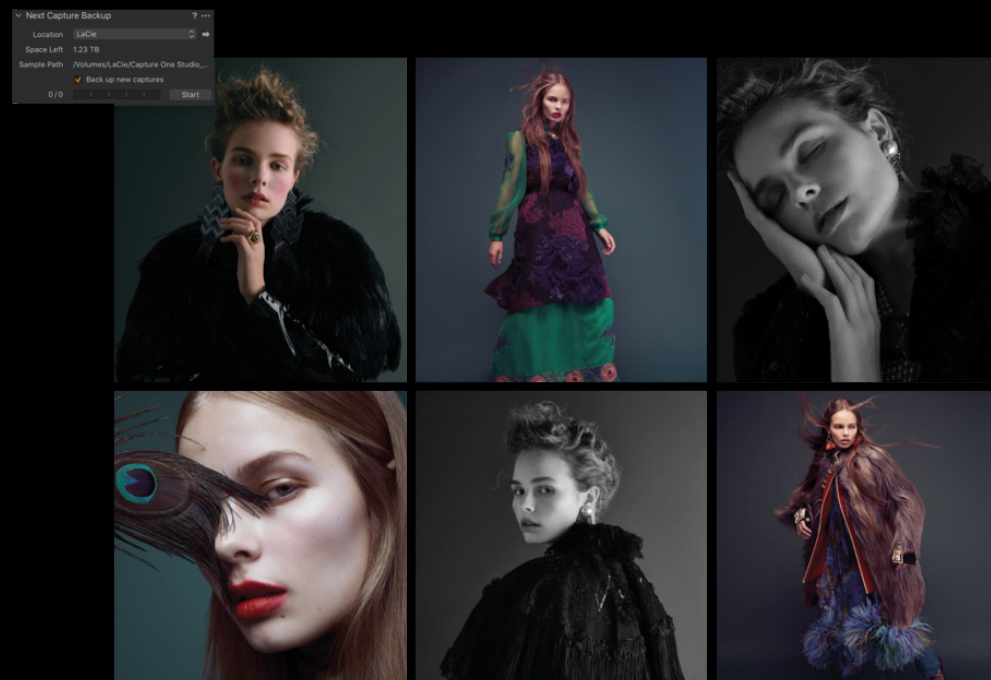
It is worth noting that the Next Capture Backup tool works with Sessions only. It is designed to do a backup of the original captured images (RAWs and/or JPEGs) only. This means that none of the image adjustments, metadata or keywords that are applied during the tethered capture session are backed up.

Do note however that the file naming being applied to the captured images with the Next Capture Naming tool will also be included in the backed-up image files. This means that any scanned barcodes that are applied as a part of the naming scheme will also be part of the file naming on the backed-up files.

You should therefore consider including some method of shot reference in the file naming with the Next Capture Naming tool in the unfortunate event that you will need to rely on the backed-up image files. You will find the Next Capture Backup tool under the Capture Tool Tab. It works with Sessions – not Catalogs – so ensure that you are running a Session when shooting tethered.

Next Capture Backup Notes:

The Next Capture Backup tool will automatically mirror the file structure of any subfolders that you create within the Capture folder. For example, if you create the subfolder Product1 within the Capture folder (and set this to be the capture destination folder), all the images will be backed-up to a Product1 subfolder too. This will keep things nicely organized.



Capture One Enterprise on Mac has the added benefit of being able to run Apple Script to automate the workflow further. These are the options that Apple Script can control in the Next Capture Backup tool:

- Change destination folder
- Enable/disable next capture Backup
- Enable/disable queue

Automation idea:

Build-in an automatic backup routine as part of a workspace automation.

04. Next Capture Keywords

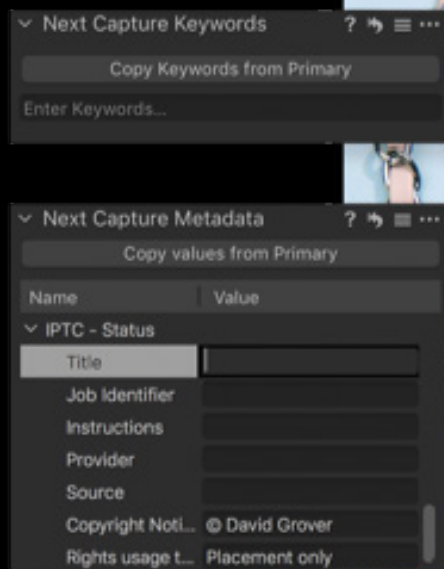
Manually adding keywords is time consuming and can be error prone. To avoid this, the Next Capture Keywords tool allows you to enter the keywords that should be associated with the next captured image(s), ensuring that product shots will be categorized correctly from the start.

This approach is basically front-loading the keyword workflow in anticipation of the next shot. It solves the issue of otherwise having to capture the image(s) before being able to apply any keywords, which could be error prone to entering the wrong keywords to the wrong image(s) at a later time.

The Next Capture Keywords tool will let you enter the relevant key-words that should be associated with the next captured image(s). The tool is linked to the Keywords tool: once you have entered the desired keywords in the Next Capture Keywords tool and captured the image(s), the selected keywords will be applied to the image(s) and will show up in the Keywords tool.

Automation idea:

Load data from Excel as keywords on an image after every capture.



The image shows two overlapping software tool windows. The top window is titled 'Next Capture Keywords' and contains a 'Copy Keywords from Primary' button and an 'Enter Keywords...' text input field. The bottom window is titled 'Next Capture Metadata' and contains a 'Copy values from Primary' button and a table with columns 'Name' and 'Value'. The table has a section for 'IPTC - Status' with the following rows:

Name	Value
IPTC - Status	
Title	
Job Identifier	
Instructions	
Provider	
Source	
Copyright Noti...	© David Grover
Rights usage t...	Placement only



05. Next Capture Metadata

Reduce manual data entry errors and speed up production time with the Next Capture Metadata tool. Relevant metadata is automatically applied to each image when shooting tethered to ensure products are categorized correctly from the start.

This approach is basically front-loading the metadata workflow in anticipation of the next shot. It solves the issue of otherwise having to capture the image(s) before being able to apply any metadata, which could be error prone to entering the wrong metadata to the wrong image(s) at a later time.

Front-loading the metadata workflow also allows you to use the entered metadata as a part of the file naming during capture with the Next Capture Naming tool. This workflow is accomplished by inserting the desired Metadata Tokens in the Next Capture Naming tool, for example Description or Category and opens up a powerful way to name the files accurately already during the capture stage.

Using the Next Capture Metadata tool:

The Next Capture Metadata tool will let you enter the relevant color tag, rating and metadata that should be associated with the next captured image(s). The tool supports exactly the same IPTC fields as in the Metadata tool. Once you have entered the desired metadata in the Next Capture Metadata tool and captured the image(s), the chosen metadata will be applied to the image file and will show up in the Metadata tool.

Capture One Enterprise has a text completion function for all metadata (text) fields where the software remembers text that you have entered before for each field. Previously entered text will appear in a popup list when you are editing a field text. Press the return key to select the text.

Note: If the camera automatically applies metadata during capture, you can either choose to keep that or overwrite it. If you leave the metadata field in question empty, the camera's value will be used. If you on the other hand enter some text, it will overwrite the camera's value.

Automation idea:

Load a row of data from Excel and map the values to the tool, ready for the next capture

06. Tool Locks

Specially designed Enterprise Workspace options match your workflow needs and can now be locked to prevent changes and help standardise your working practice for a consistent and efficient workflow.

Capture One Enterprise has the ability to lock specific tools so that they cannot be altered by accident during a busy shoot. It is also possible to assign a pin code to the locking system so that the administrator or photographer in charge can prevent assistants from unlocking the tools and change important capture properties. The following tools can be locked:

Capture Tools:

- Camera + Camera Settings (except the Live View and Capture buttons)
- Camera Focus
- Next Capture Adjustments
- Next Capture Keywords
- Next Capture Location
- Next Capture Metadata
- Next Capture Naming

Workflow Tools:

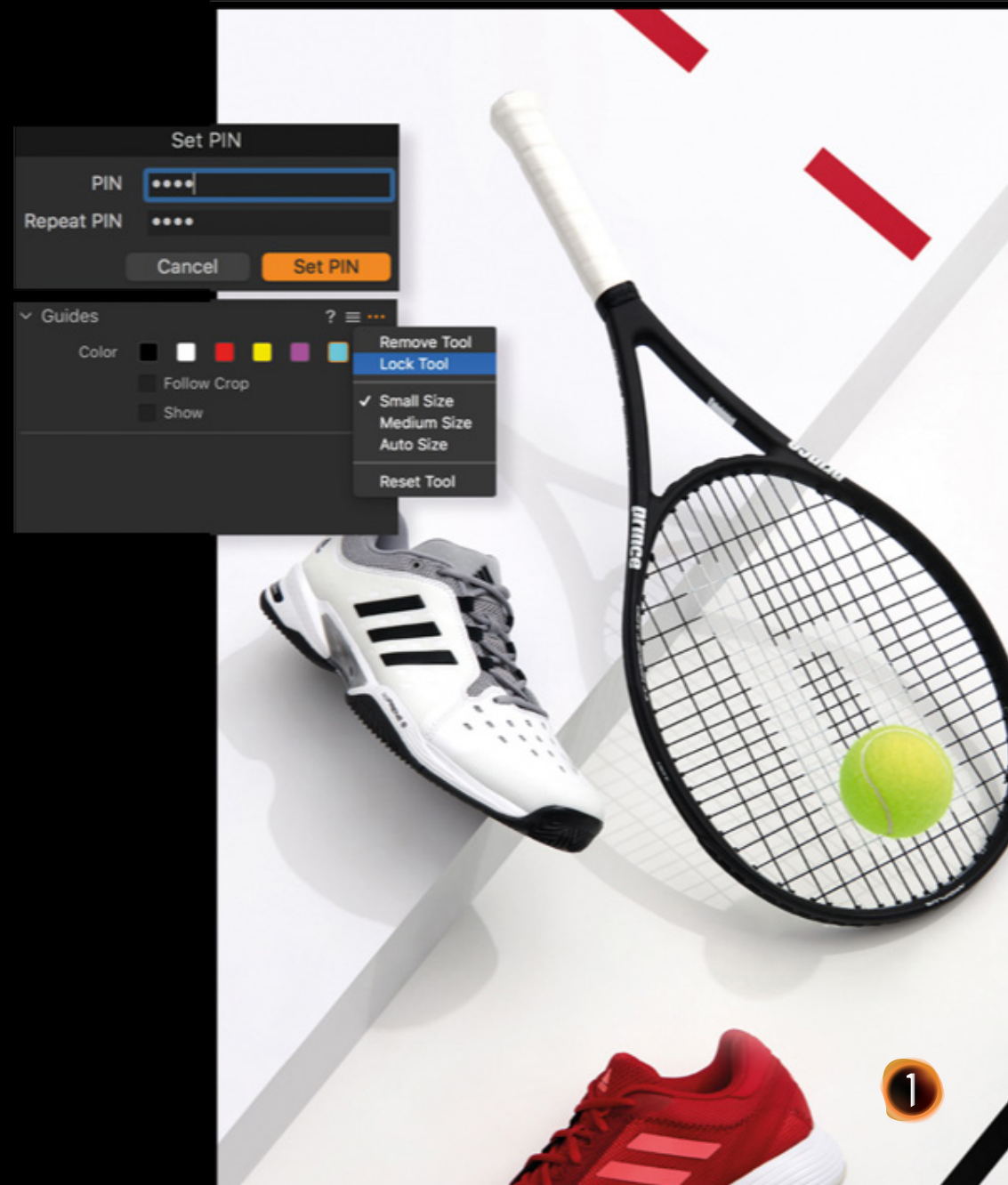
- Guides

Output Tools:

- Process Recipe
- Process Recipes
- Output location
- Output Naming

Automation Idea:

Deploy a lock as part of a designed "role" workspace for seasonal workers.





07. Capture Pilot with Enterprise enhancements

Capture Pilot on an iOS device can be an invaluable tool to help remotely shoot, rate, tag and compose images. But now it comes with advanced functionality when using Capture One Enterprise including the option to display an added Overlay, Grid or Guides on top of the image displayed on the iOS app screen.

The Overlay, Grid and Guides can be toggled on and off in the Capture Pilot app by tapping on their icons at the bottom of the app screen. It is worth pointing out that the visibility in the app is controlled independently of whether the Overlay, Grid or Guides are enabled or not in Capture One Enterprise. This means that for example the Overlay or the Guides can be hidden in Capture One Enterprise but visible in the Capture Pilot app, or vice versa.

You will need to update the Capture Pilot app (version 2.2.x or later) to enable this functionality. Also note that Capture One Enterprise controls the Overlay, Grid and Guides with the associated tools. You cannot change the Overlay, Grid or Guides on the connected device, you can only toggle their visibility on and off.

Automation Idea:

View the guides automated into the Capture One workflow, mirrored on the Pilot preview for additional QA benefits.



08. Dedicated Studio workspaces

Specially designed Enterprise Workspace options match your workflow needs and can now be locked to prevent changes and help standardise your working practice for a consistent and efficient workflow.

Workspaces fitted with the new Enterprise tools can be found by going to the menu and choosing Window > Workspace. Enterprise ships with 3 workspaces specially designed for Editing, Rate and Review and for Tethered Capture.